

US Army Corps
of Engineers
Memphis District

Public Notice

FILE NUMBER: MVM 2018-156

NOTICE DATE:
May 04, 2018

Attn: Postmaster,
Please Post Until

EXPIRATION DATE:
June 04, 2018



Public Notice

U.S. Army Corps of Engineers

AUTHORITY: Pursuant to 33 CFR 325, as published in the Federal Register dated November 13, 1986, this notice announces an application submitted for a Department of the Army permit under Section 10 of the Rivers and Harbors Act and Section 404 of the Clean Water Act.

APPLICANT:

Mr. Terry Netzel
Lallemand Yeast Group
251 Stiles Drive
Memphis TN 38127

PURPOSE: The project purpose is to construct a new unloading dock to offload liquid molasses from supply barges.

LOCATION: The project site is located along the eastern bank of the Mississippi River at River Mile 739 in Memphis, Shelby County, Tennessee, as shown on the attached map (Sheet 1V). The approximate latitude and longitude for the project are 35.1890° and -90.0592°.

DESCRIPTION OF WORK: The new unloading dock will consist of a work barge 35 feet wide and 200 feet long. The work barge will be moored in place by two (2) guide pilings on each end of the barge. The guide pilings will be driven into the riverbed to a depth of approximately 30 feet. The pilings will penetrate articulated concrete revetment mattress installed by the Corps of Engineers. Approximately 200 tons of Class Two riprap will be installed to armor the location where the concrete mattress has been penetrated. Five (5) bents will be installed that will support the piping used to offload the molasses from the supply barges (Sheets 1-3).

ENDANGERED SPECIES: The interior least tern (*Sterna antillarum athalassos*), Indiana bat (*Myotis sodalis*), and Northern long-eared bat (*Myotis septentrionalis*) are listed as threatened or endangered by U.S. Fish and Wildlife Service (USFWS) in Shelby County, Tennessee. Based on best available information, the Corps of Engineers determination is that the project will have no adverse effect on federally listed rare, threatened, or endangered species. This application is being coordinated with USFWS. Any comments they may have regarding endangered or threatened wildlife or plants, or their critical habitat, will be considered in our evaluation of the described work.

CULTURAL RESOURCES: The Memphis District will evaluate information provided by the State Historic Preservation Officer, federally-recognized Tribes and the public in response to this public notice.

FLOODPLAIN: In accordance with 44 CFR Part 60 (Floodplain Management and Use), participating communities are required to review all proposed development to determine if a floodplain development permit is required. Floodplain administrators should review the proposed public notice and notify this office of any floodplain development permit requirements.

PUBLIC INTEREST REVIEW: The purpose of this public notice is to advise all interested parties of the activities for which a permit is sought and to solicit comments and information necessary to evaluate the probable impact on the public interest.

The decision whether to issue a permit will be based on an evaluation of the probable impact including cumulative impacts of the activity on the public interest. That decision will reflect the national concern for both protection and utilization of important resources. The benefits which reasonably may be expected to accrue from the project must be balanced against its reasonably foreseeable detriments. All factors which may be relevant to the project will be considered, including the cumulative effects thereof; among those are conservation, economics, aesthetics, general environmental concerns, wetlands, historic properties, fish and wildlife values, flood hazards, floodplain values, land use, navigation, shoreline erosion and accretion, recreation, water supply and conservation, water quality, energy needs, safety, food and fiber production, mineral needs, considerations of property ownership, and in general, the needs and welfare of the people.

The Corps of Engineers is soliciting comments from the public; federal, state, and local agencies and officials; federally recognized Tribes; and other interested parties in order to consider and evaluate the impacts of this proposed activity. Any comments received will be considered by the Corps of Engineers to determine whether to issue, modify, condition or deny a permit for this proposal. To make this decision, comments are used to assess impacts on endangered species, historic properties, water quality, general environmental effects, and the other public interest factors listed above. Comments are used in the preparation of an Environmental Assessment and/or an Environmental Impact Statement pursuant to the National Environmental Policy Act. Comments are also used to determine the need for a public hearing and to determine the overall public interest of the proposed activity.

PUBLIC HEARING: Any person may request, in writing, within the comment period specified in this notice that a public hearing be held to consider this application. Requests for a public hearing shall state, with particularity, the reason for holding a public hearing. The District Engineer will determine if the issues raised are substantial and whether a hearing is needed for making a decision. If a public hearing is held, it will be for the purpose of obtaining additional information that we could not otherwise obtain through a public notice process; not to inform the public about the specific details of the project in greater detail than what is found in this notice. This is not a Corps of Engineers project. We are not a proponent nor are we an opponent of the project. We are merely the permitting authority of Section 10 permits required by our office.

COMMENTS: To request additional information or provide comments on this notice, please contact Mr. Charles Keating using the information below:

U.S. Army Corps of Engineers - Memphis District
ATTN: Charles D. Keating
167 N. Main Street, B-202
Memphis, Tennessee 38103-1894
e-mail: charles.d.keating@usace.army.mil
phone: (901) 544-0733
fax: (901) 544-0211

Comments may be sent via mail or email. The Corps of Engineers may provide copies of all comments, (including name & address of those providing comments) to the applicant for consideration and response prior to a decision. Comments must be received by the expiration date listed on page one of this notice.

For Final Individual Permits actions in the Memphis District, go to the following link: <http://geo.usace.army.mil/egis/f?p=340:2:0::NO:RP>. Using the Filter by District drop down box, select MVM-Memphis District, then select the year and month (information will populate in the table below). All pending individual permits can be located by selecting the “**Pending IP**” tab above. All of the environmental documents and statements of findings supporting issuance or denial of the permit decisions are available upon written request and where applicable, upon the payment of administrative fees. They are also available at the Memphis District, Regulatory Branch office for examination.

Gregg Williams
Chief
Regulatory Branch

Attachments

Drawn TL

Chkd _____

Scale NOTED

Date 2/8/18

B
S

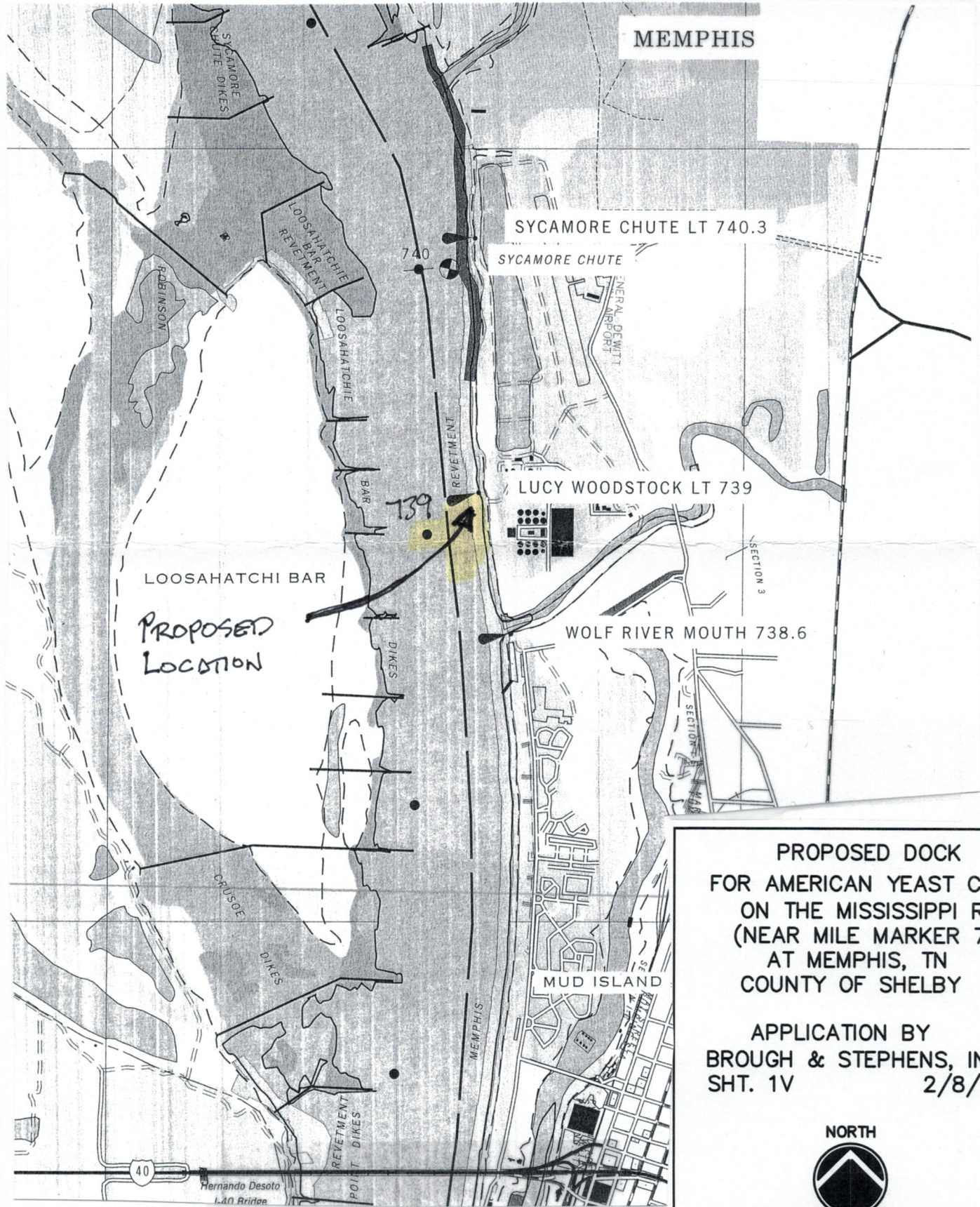
BROUGH and STEPHENS, INC.
Consulting Engineers

MEMPHIS, TENNESSEE

FILE 17107

SHEET NO.

1V



PROPOSED DOCK
 FOR AMERICAN YEAST CORP.
 ON THE MISSISSIPPI RIVER
 (NEAR MILE MARKER 739)
 AT MEMPHIS, TN
 COUNTY OF SHELBY

APPLICATION BY
 BROUGH & STEPHENS, INC.
 SHT. 1V 2/8/18



REV.	BY	DATE	Drwn TL
			Chkd
			Scale NOTED
			Date 3/23/18

B/S

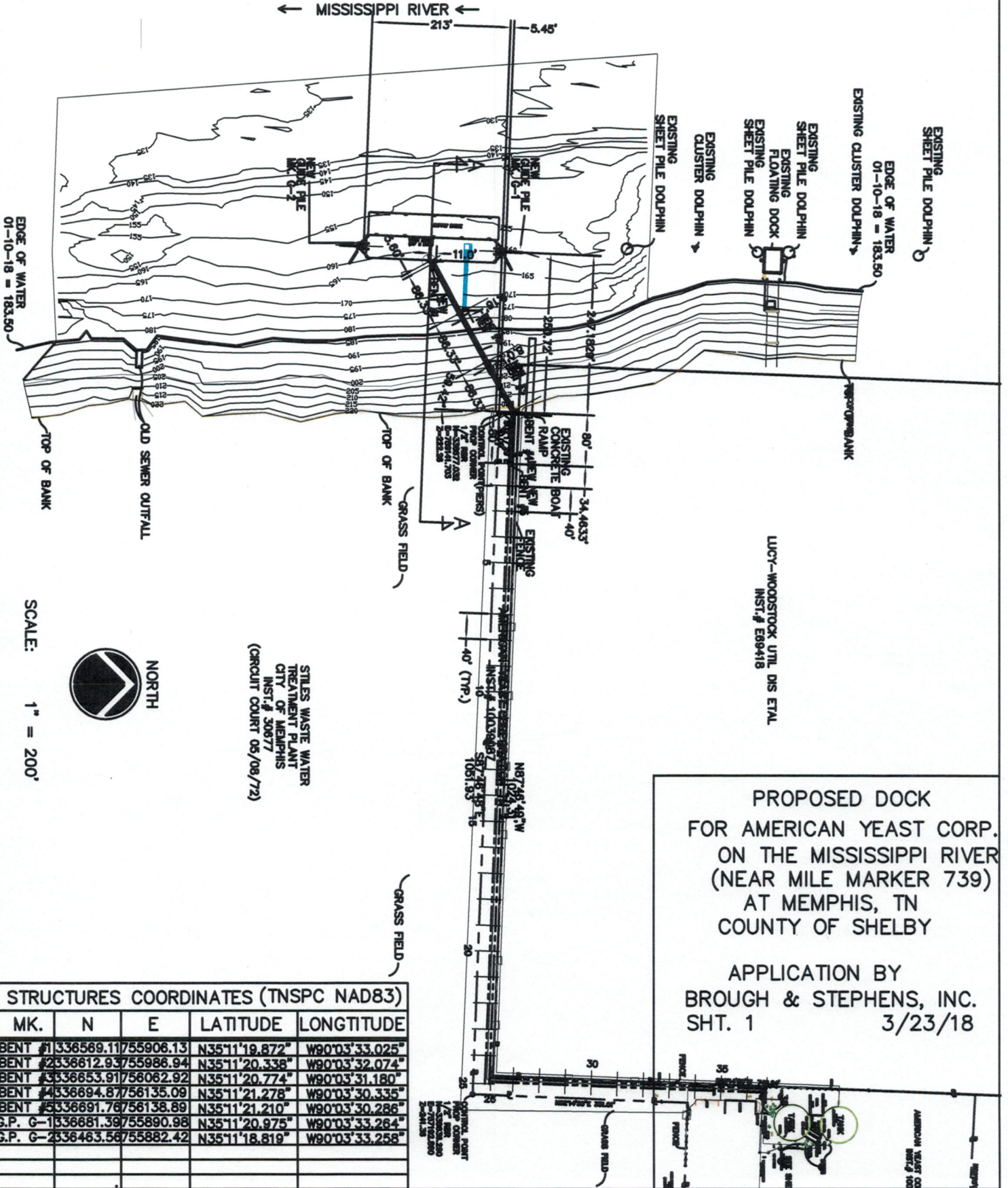
BROUGH and STEPHENS, INC.
Consulting Engineers

MEMPHIS, TENNESSEE

FILE 17107

SHEET NO.

1



PROPOSED DOCK
FOR AMERICAN YEAST CORP.
ON THE MISSISSIPPI RIVER
(NEAR MILE MARKER 739)
AT MEMPHIS, TN
COUNTY OF SHELBY

APPLICATION BY
BROUGH & STEPHENS, INC.
SHT. 1 3/23/18

STRUCTURES COORDINATES (TNPC NAD83)

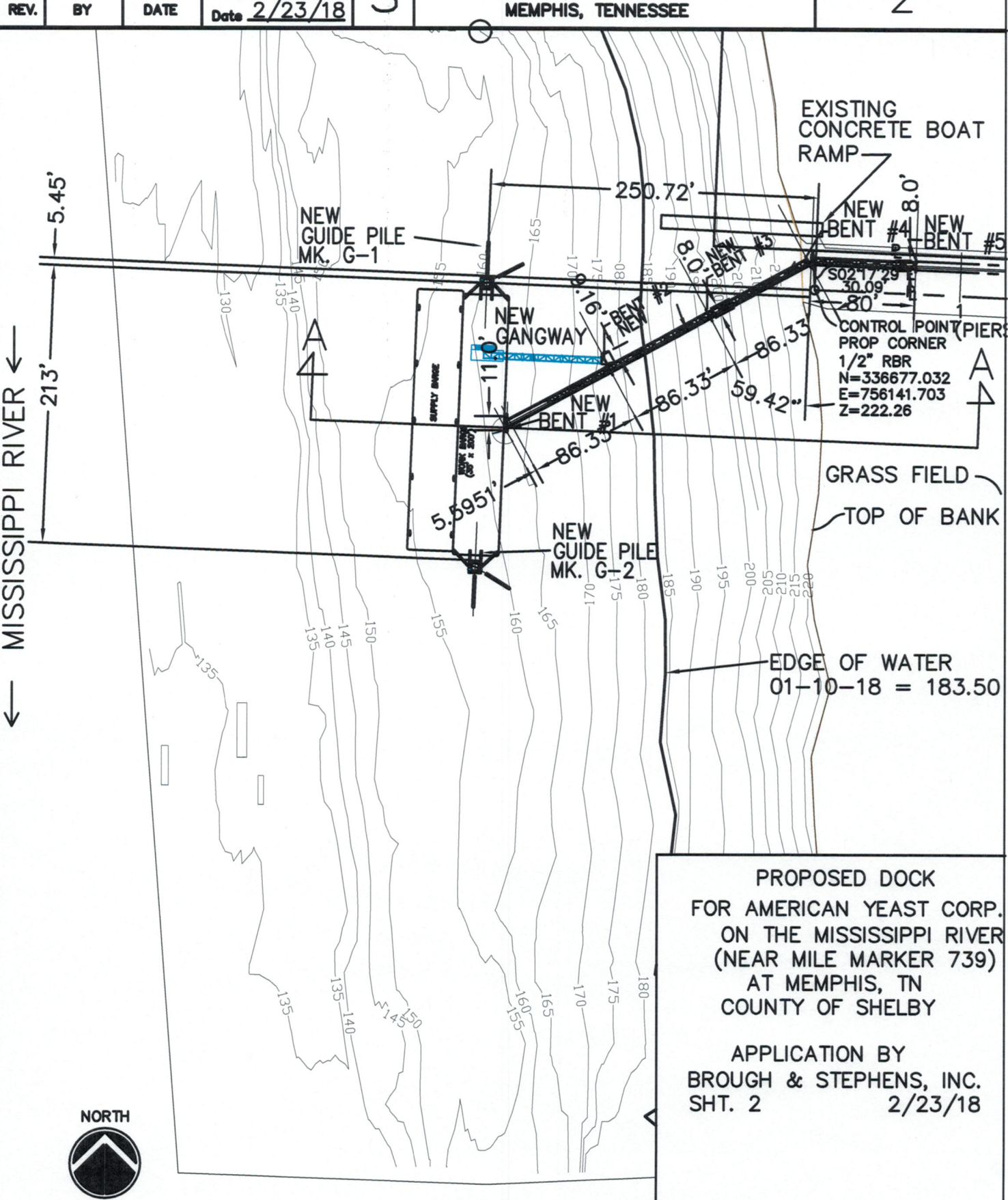
MK.	N	E	LATITUDE	LONGITUDE
BENT #1	336569.11	55906.13	N35°11'19.872"	W90°03'33.025"
BENT #2	336612.93	55986.94	N35°11'20.338"	W90°03'32.074"
BENT #3	336653.91	56082.92	N35°11'20.774"	W90°03'31.180"
BENT #4	336694.87	56135.09	N35°11'21.278"	W90°03'30.335"
BENT #5	336691.76	56138.89	N35°11'21.210"	W90°03'30.286"
G.P. G-1	336681.39	55890.98	N35°11'20.975"	W90°03'33.264"
G.P. G-2	336463.56	55882.42	N35°11'18.819"	W90°03'33.258"

Drawn TL
 Chkd _____
 Scale NOTED
 Date 2/23/18

B/S

BROUGH and STEPHENS, INC.
 Consulting Engineers
 MEMPHIS, TENNESSEE

FILE 17107
 SHEET NO. 2



← MISSISSIPPI RIVER ←

NORTH



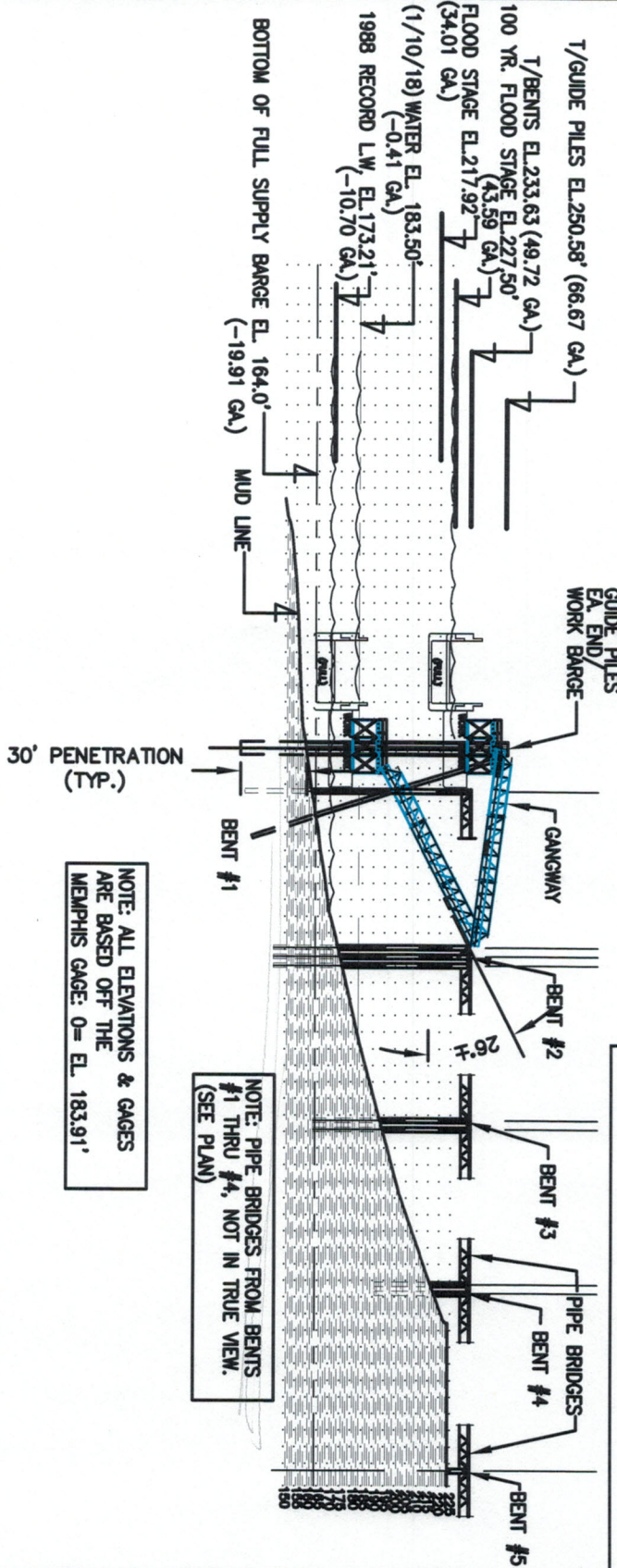
SCALE: 1" = 100'

PROPOSED DOCK
 FOR AMERICAN YEAST CORP.
 ON THE MISSISSIPPI RIVER
 (NEAR MILE MARKER 739)
 AT MEMPHIS, TN
 COUNTY OF SHELBY

APPLICATION BY
 BROUGH & STEPHENS, INC.
 SHT. 2 2/23/18

			Draw <u>TL</u>	BROUGH and STEPHENS, INC. Consulting Engineers MEMPHIS, TENNESSEE	FILE 17107
			Chkd _____		SHEET NO.
			Scale <u>NOTED</u>		3
REV.	BY	DATE	Date <u>2/23/18</u>		

SECTION "A-A"
SOUTH ELEV. @ RIVER
SCALE: 1" = 80'-0"



NOTE: ALL ELEVATIONS & GAGES ARE BASED OFF THE MEMPHIS GAGE: 0= EL. 183.91'

NOTE: PIPE BRIDGES FROM BENTS #1 THRU #4, NOT IN TRUE VIEW. (SEE PLAN)

PROPOSED DOCK
FOR AMERICAN YEAST CORP.
ON THE MISSISSIPPI RIVER
(NEAR MILE MARKER 739)
AT MEMPHIS, TN
COUNTY OF SHELBY

APPLICATION BY
BROUGH & STEPHENS, INC.
SHT. 2 2/23/18