

Figure: 3.12

Top 150 Contributing Watersheds in the Mississippi River Basin to the Gulf of Mexico for TN (A), TP (B), and Maps Showing the Probability for Watersheds Being Placed in the Top 150 for TN (C) and TP (D) (Robertson et al. 2009)

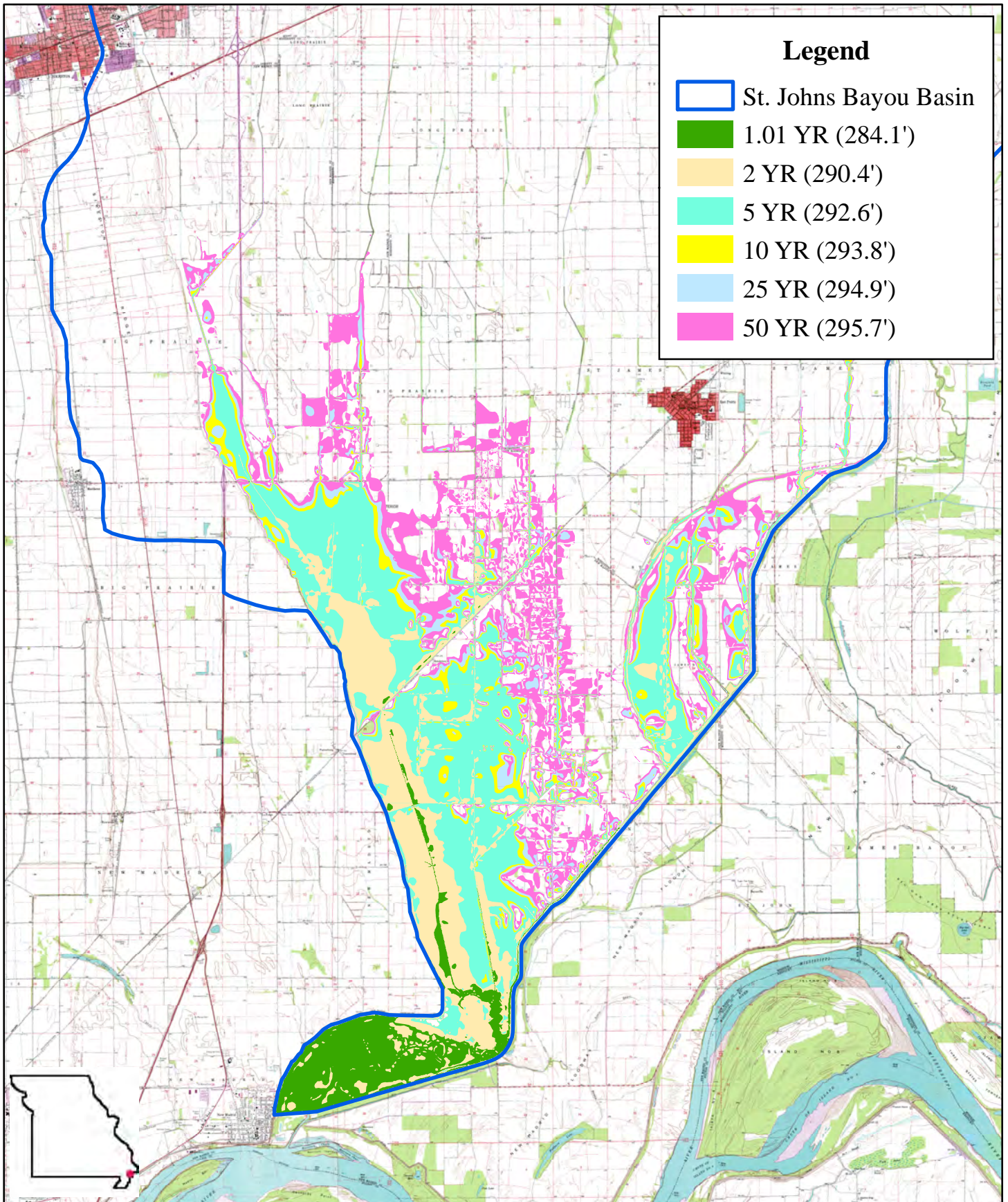
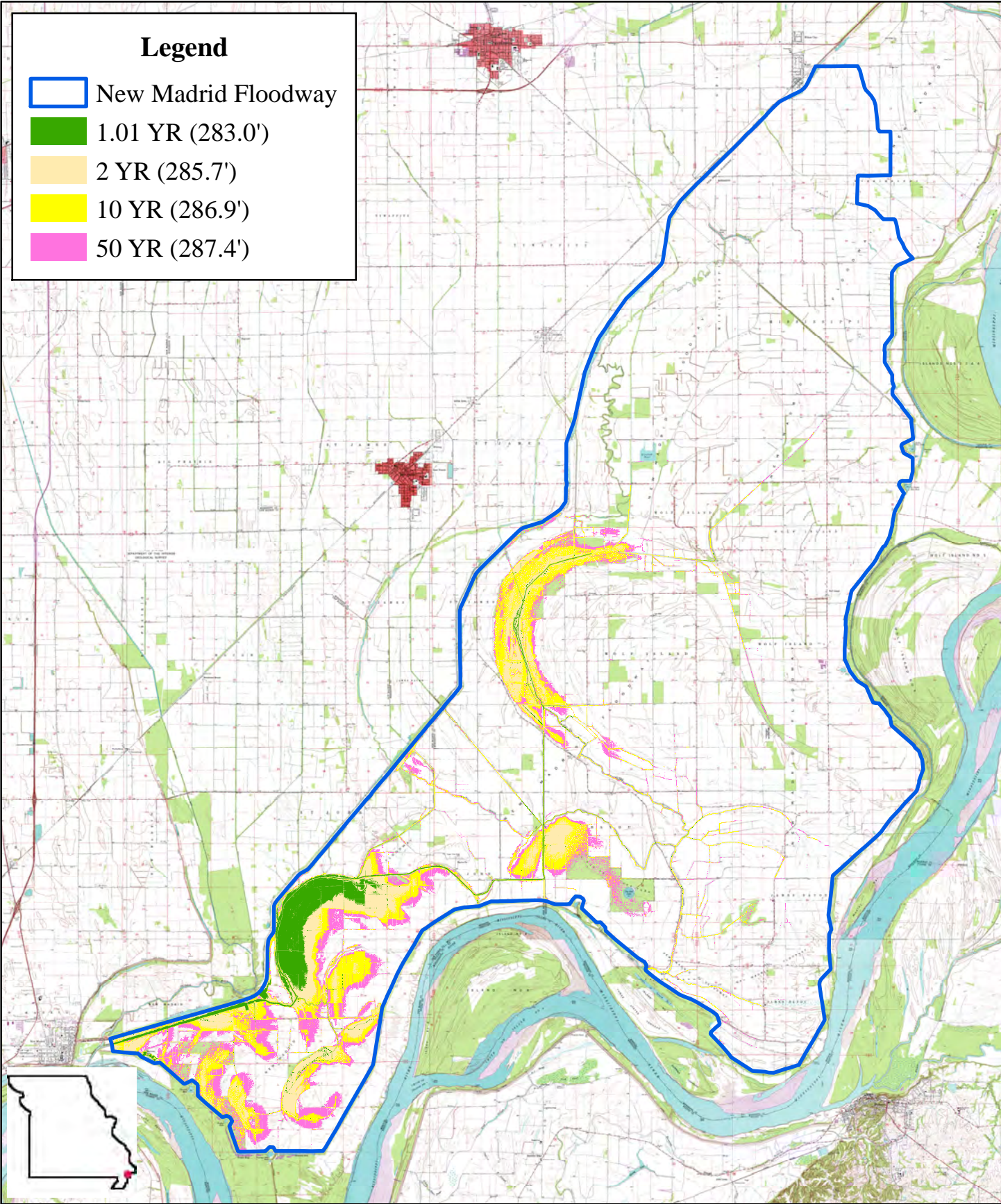


Figure: 4.1

0 1 2 Miles

St. Johns Bayou Basin
Alt. 2.1 Flood Return Intervals






Legend

-  New Madrid Floodway
-  1.01 YR (283.0')
-  2 YR (285.7')
-  10 YR (286.9')
-  50 YR (287.4')



Figure: 4.2

 Miles
0 1.5 3

**New Madrid Floodway
Alt. 2.2 Flood Return Intervals**



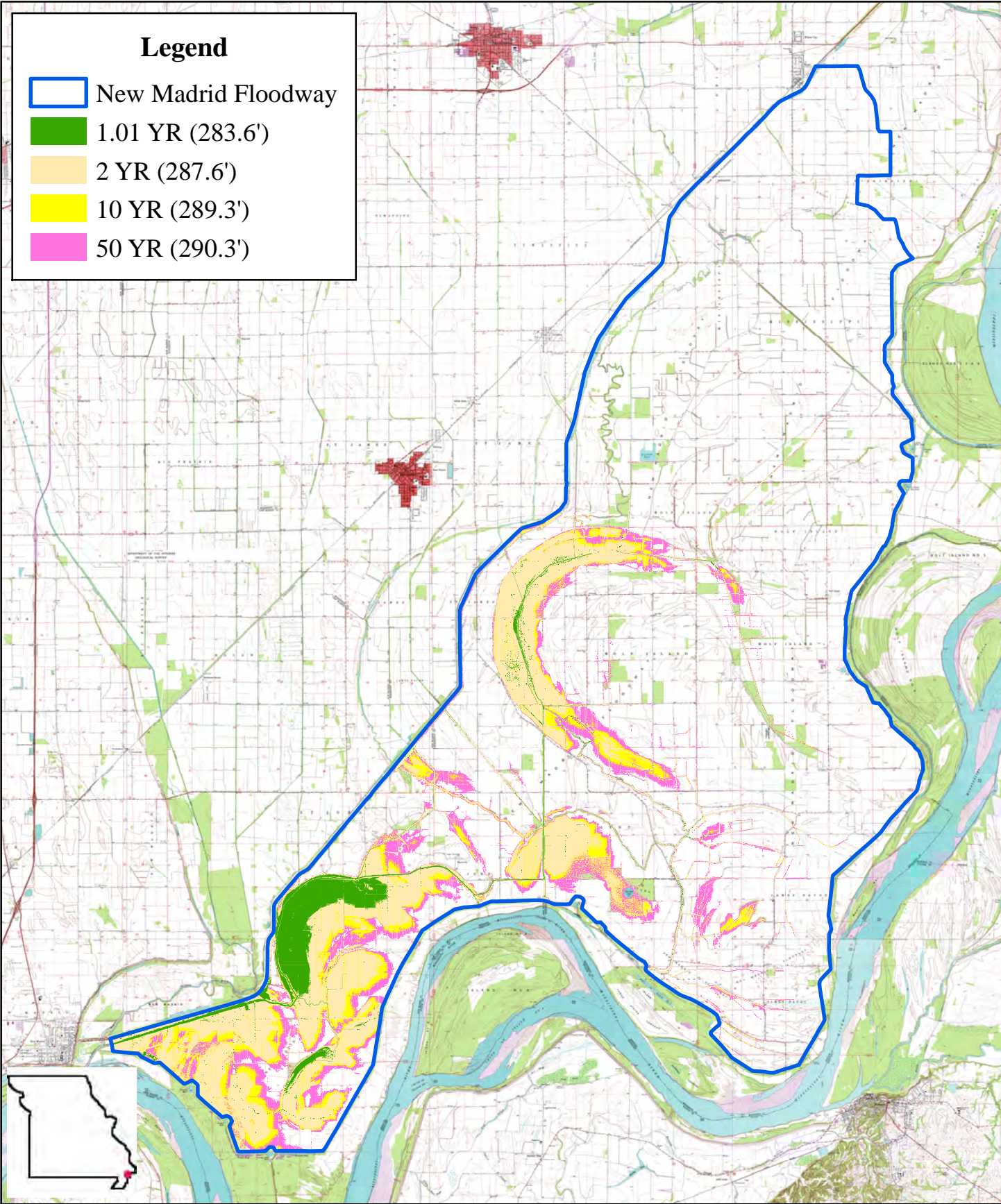


Figure: 4.3

0 1.5 3 Miles

New Madrid Floodway
Alt. 3.1 Flood Return Intervals



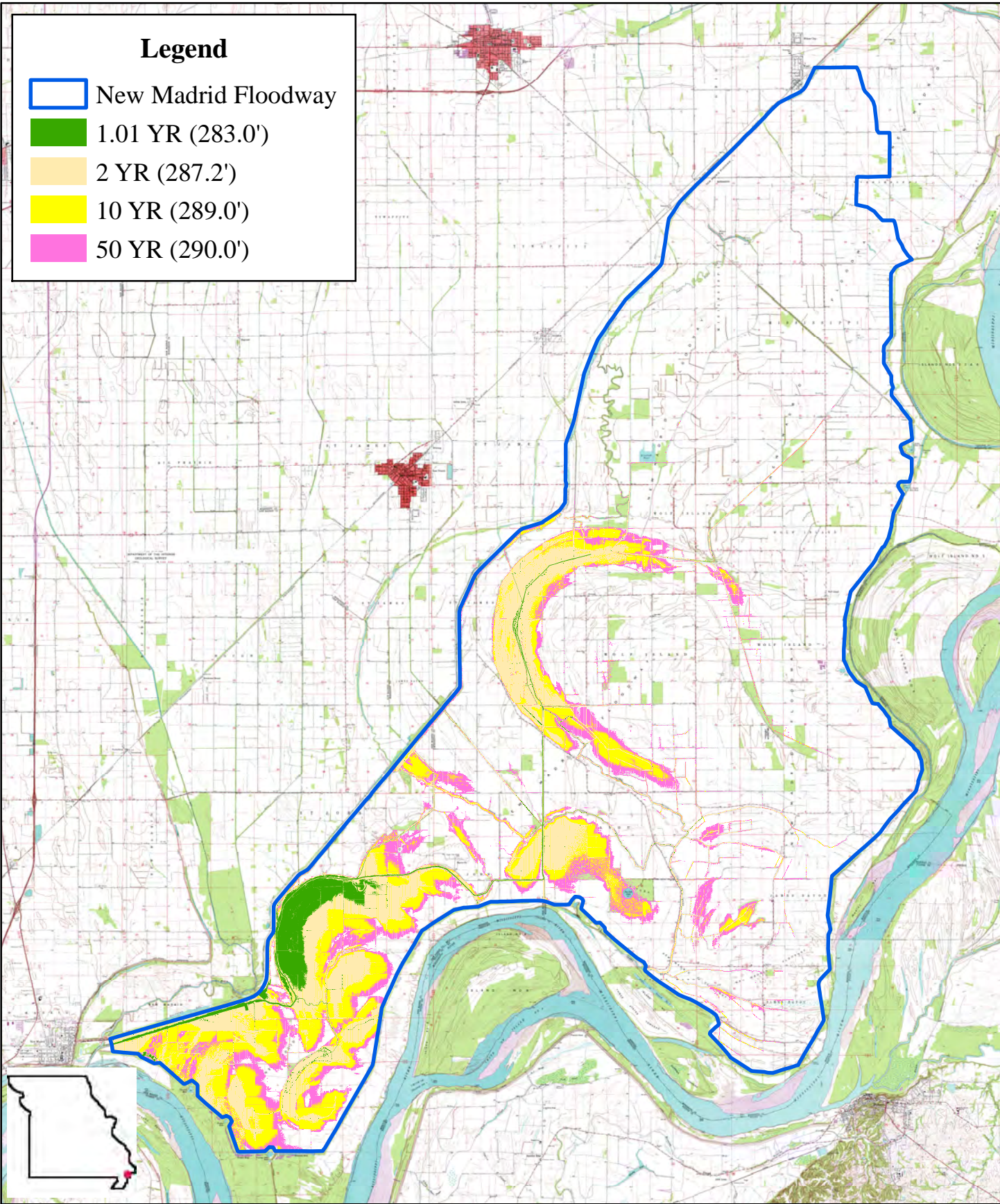


Figure: 4.4

0 1.5 3 Miles

New Madrid Floodway
Alt. 3.2 Flood Return Intervals



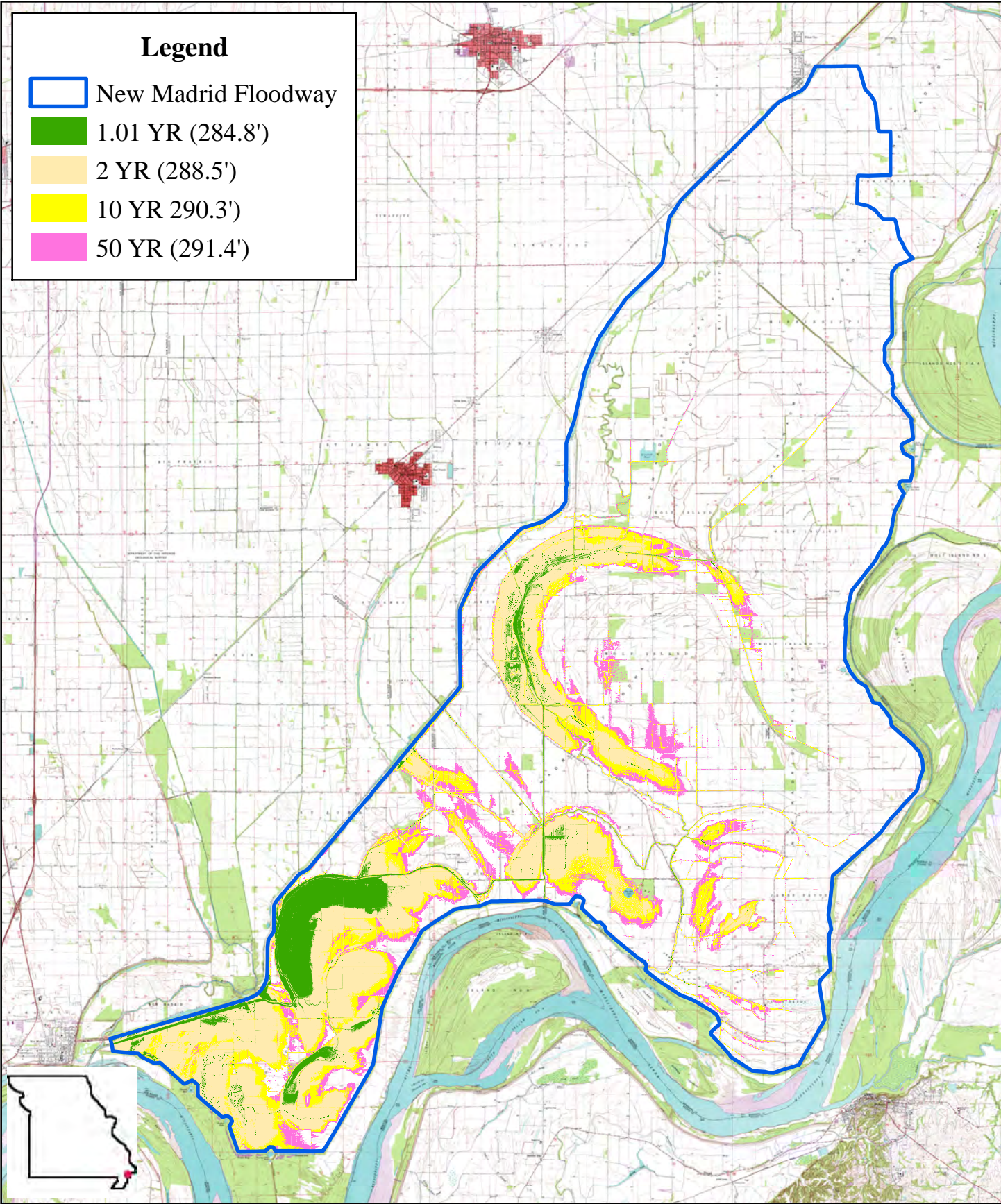


Figure: 4.5

0 1.5 3 Miles

New Madrid Floodway
Alt. 4 Flood Return Intervals



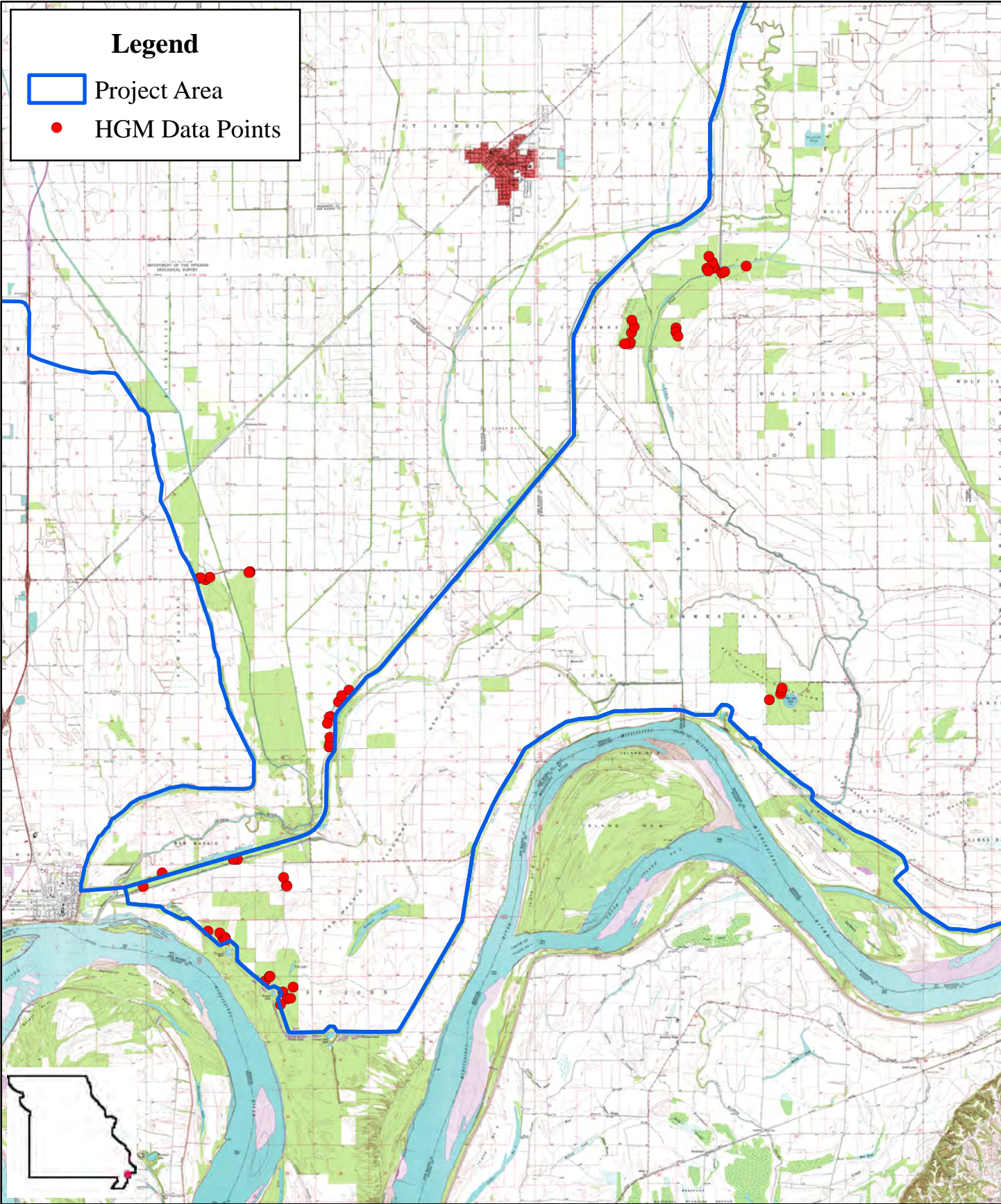
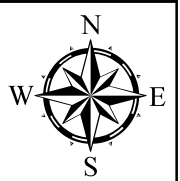


Figure: 4.6

0 1 2 Miles

HGM Data Points



St. Johns Ditch at Henderson Mound, MO
Site # 7042450 - New Madrid County

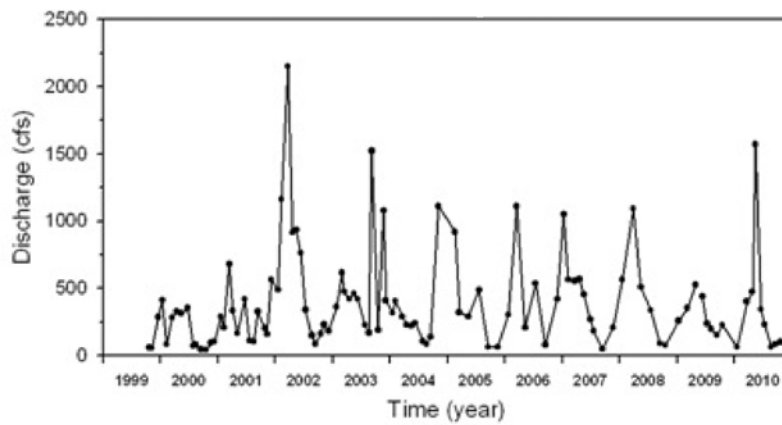






Figure: 4.7

Water Discharge (cfs) from St. Johns Bayou
at Henderson Mound, MO (Site #7042450)
Between 1999 and 2010

Legend

-  Project Area
-  St. Johns Bayou Construction Reach
-  Setback Levee Ditch Construction Reach
-  St. James Ditch Construction Reach

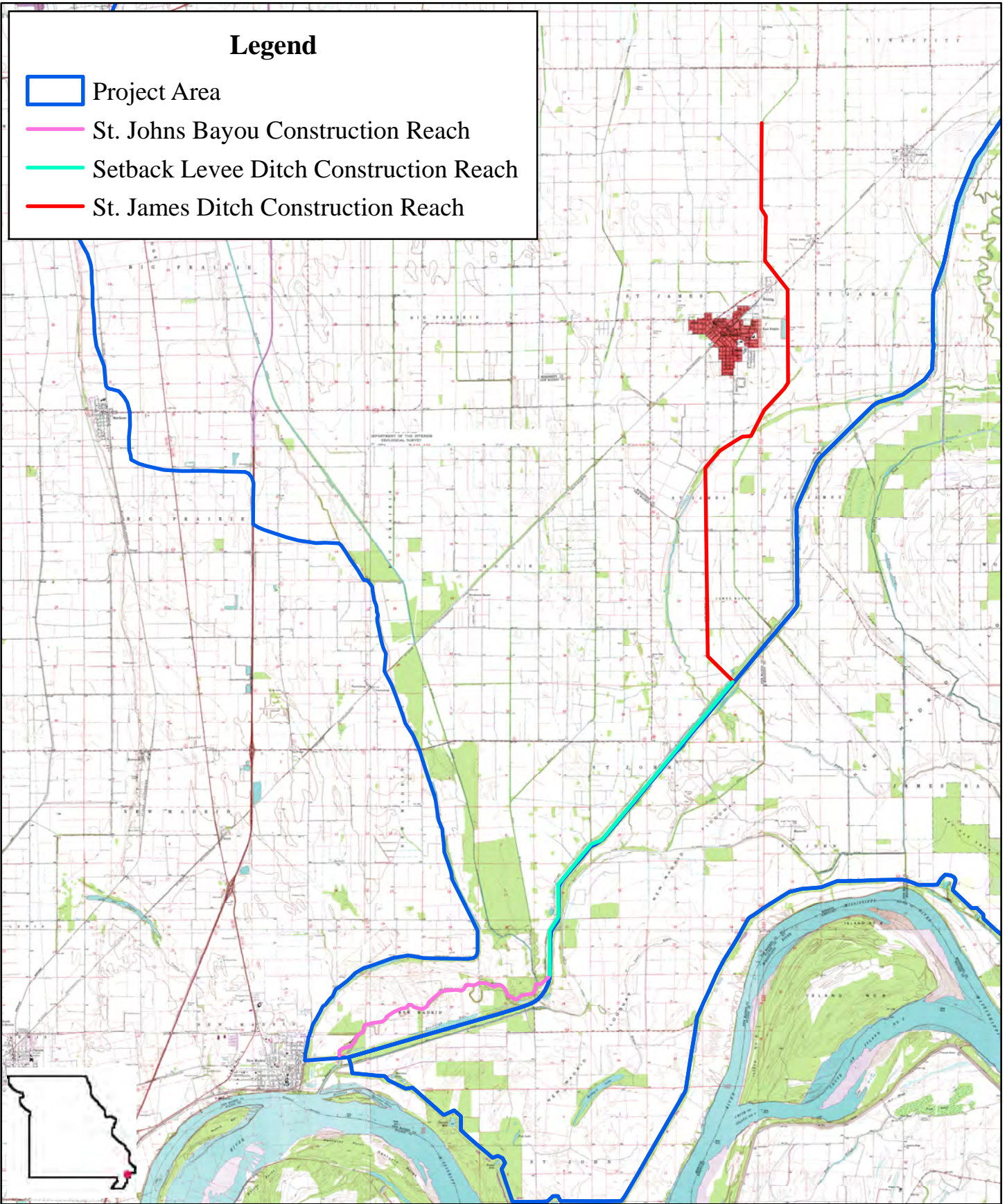
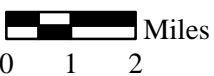


Figure: 4.8



Proposed Ditch Construction Reach



Wetlands (acres)

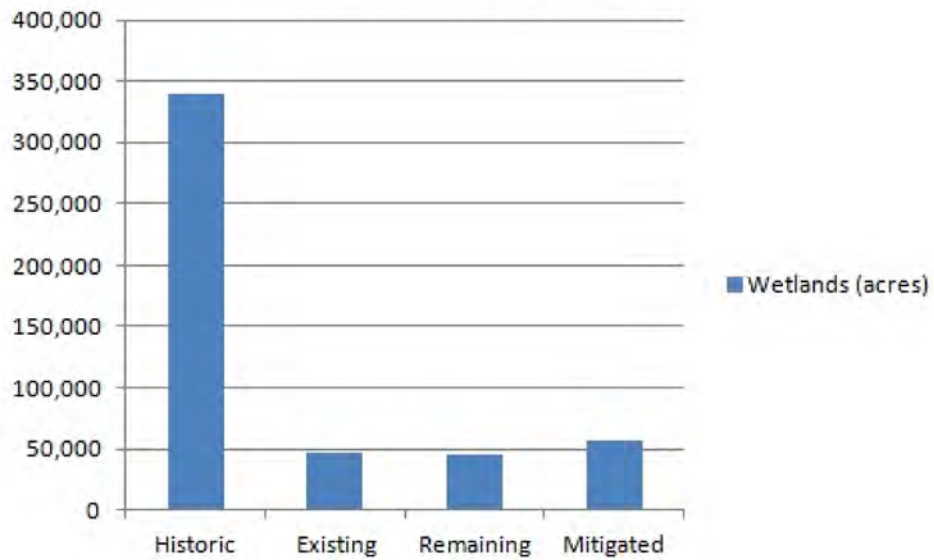


Figure: 4.9

Wetland Acreage in the Project Area

Terrestrial Wildlife (AAHU)



Figure: 4.10

Terrestrial Wildlife Average Annual
Habitat Units (AAHU) in the Project Area

Waterfowl (DUD)

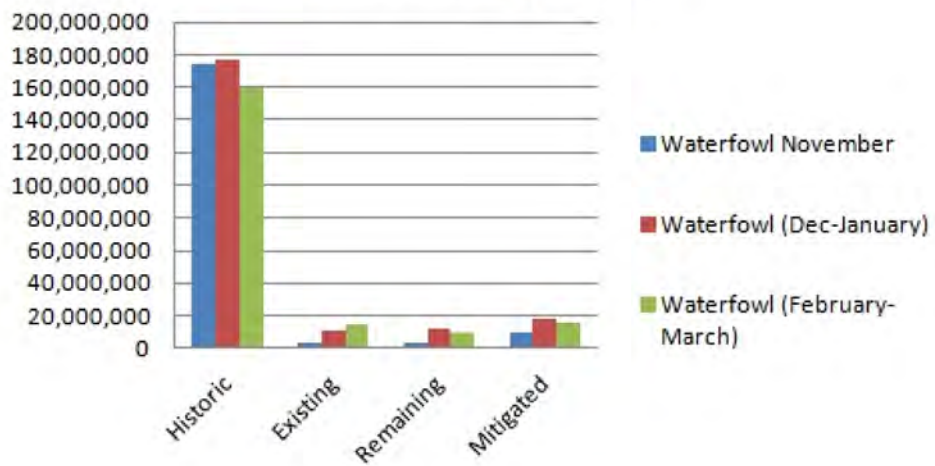


Figure: 4.11

Duck-Use-Days (DUD) in the Project Area

Shorebirds (Spring)

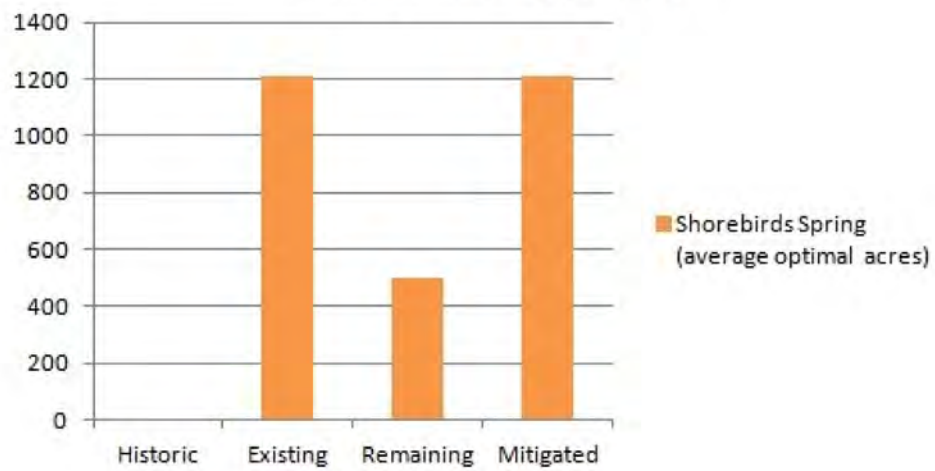


Figure: 4.12

Average Optimal Acres of Spring
Shorebird Habitat in the Project Area

Fish Spawning and Rearing Habitat

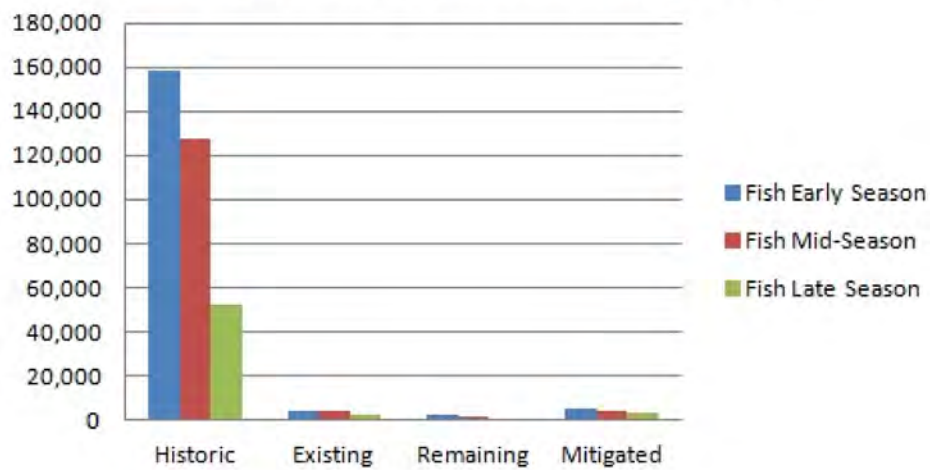
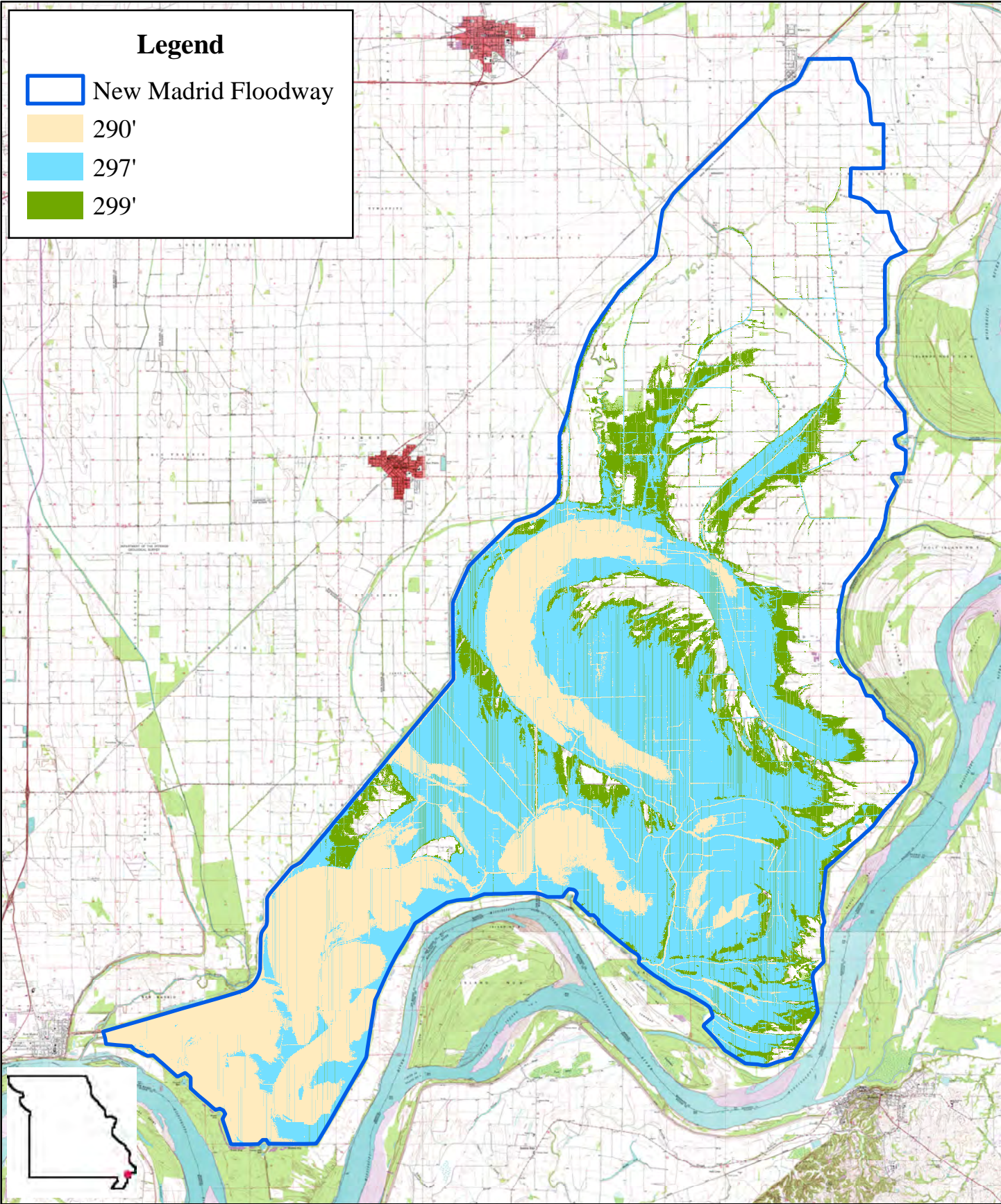


Figure: 4.13

Fish Spawning and Rearing Average Annual Habitat Units in the Project Area



Legend

- New Madrid Floodway
- 290'
- 297'
- 299'



Figure: 4.14

0 1.5 3 Miles

**New Madrid Floodway
Inundation at Selected Elevations**



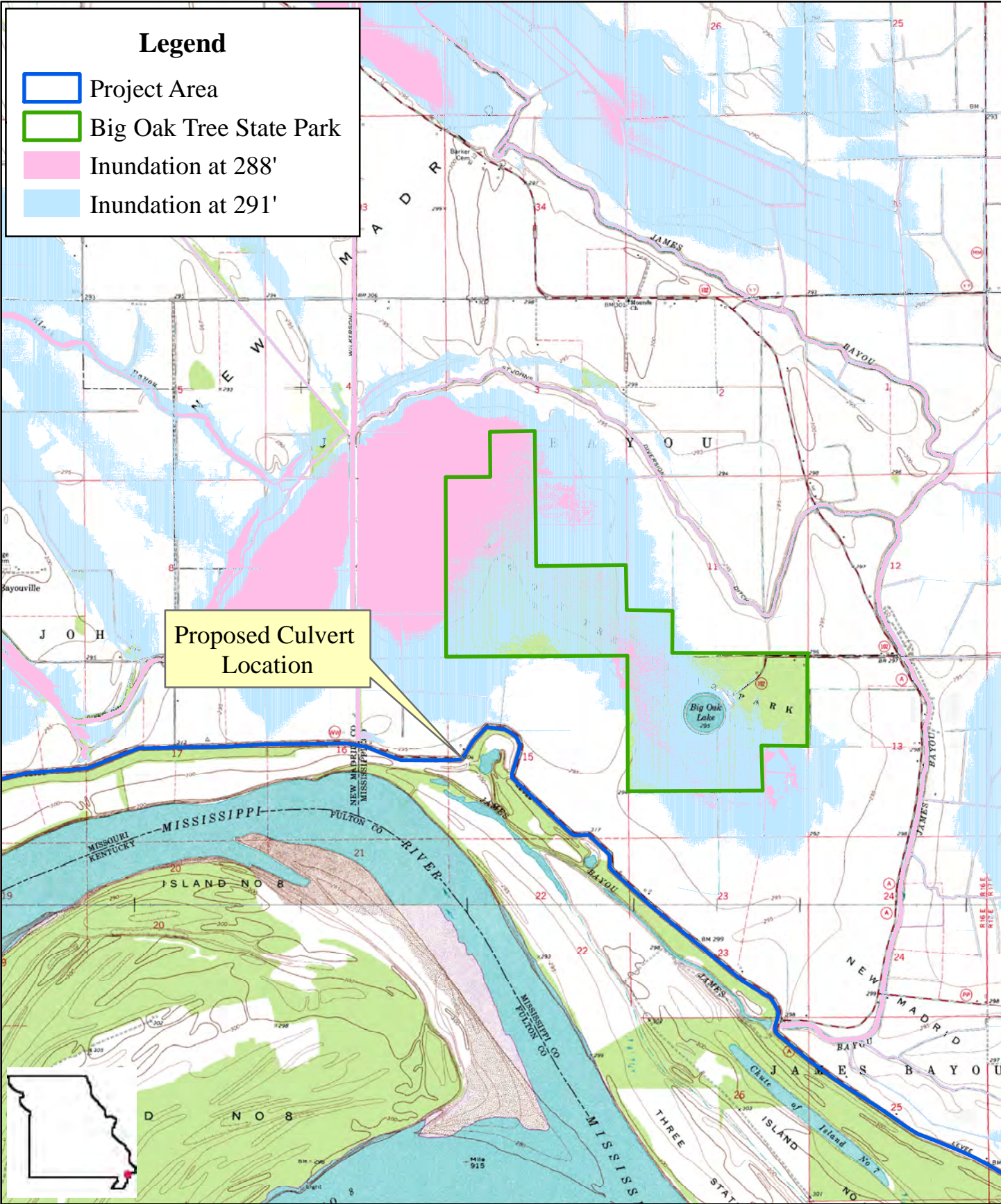


Figure: 5.1
 0 0.5 1 Miles

Big Oak Tree State Park Hydrologic Restoration



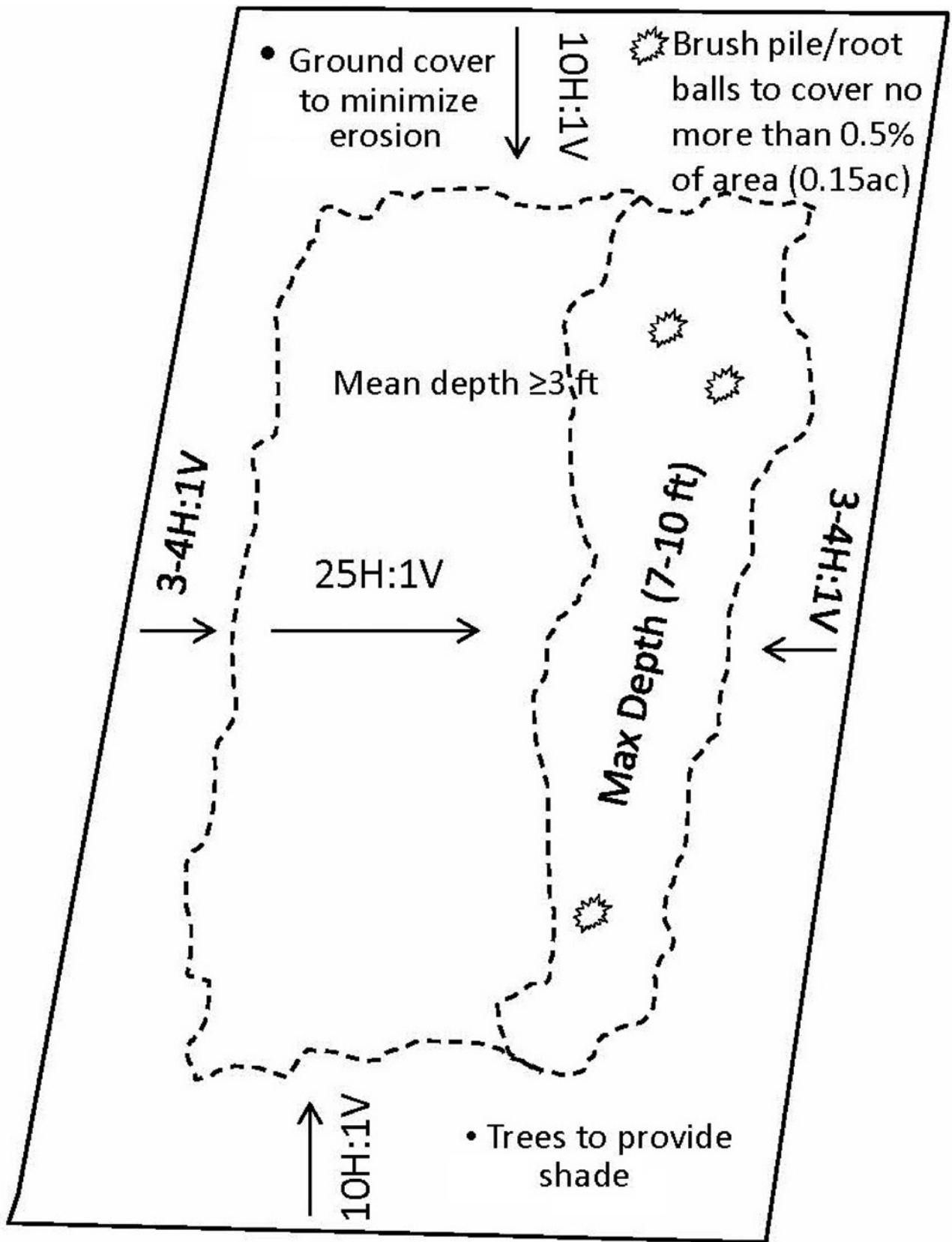
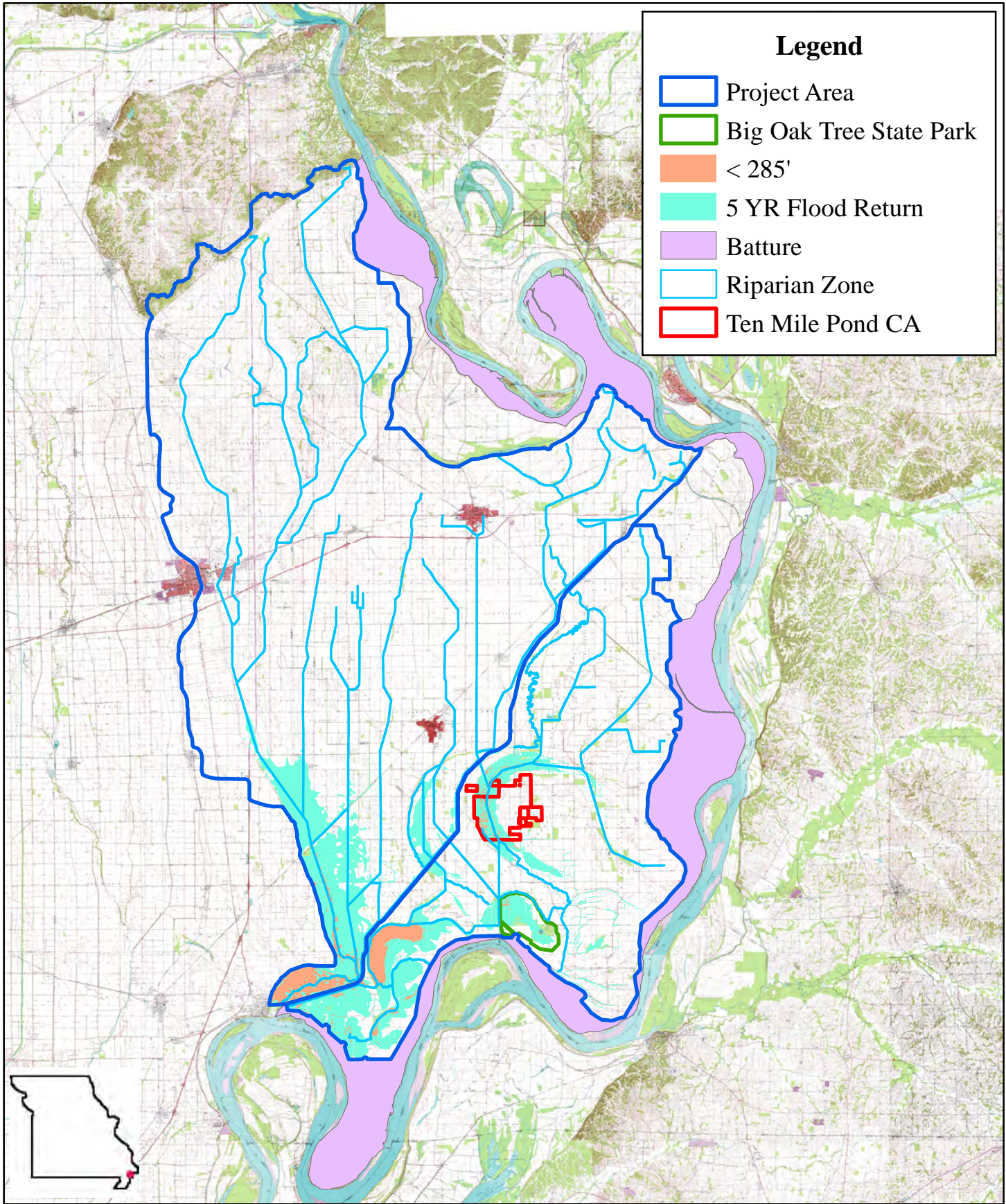


Figure: 5.2

Plans for Ecologically Designed Borrow Pit



Legend









-  Project Area
-  Big Oak Tree State Park
-  < 285'
-  5 YR Flood Return
-  Batture
-  Riparian Zone
-  Ten Mile Pond CA

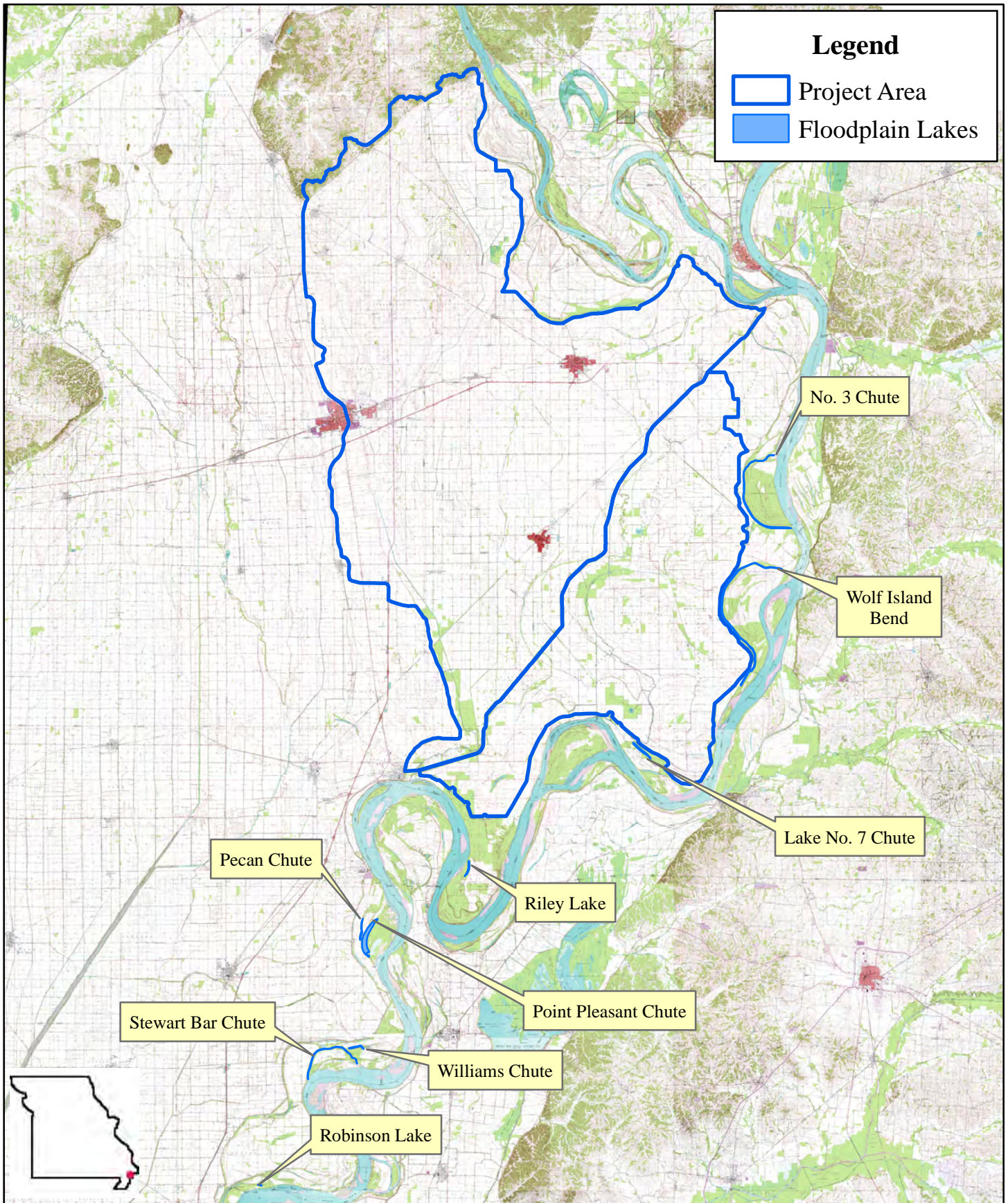


Figure: 5.3

 Miles
0 3 6

Proposed Mitigation Zones





Legend

- Project Area
- Floodplain Lakes

No. 3 Chute

Wolf Island Bend

Lake No. 7 Chute

Pecan Chute

Riley Lake

Point Pleasant Chute

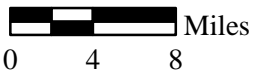
Stewart Bar Chute

Williams Chute

Robinson Lake



Figure: 5.5



Floodplain Lakes in Project Area Vicinity with Restoration Potential



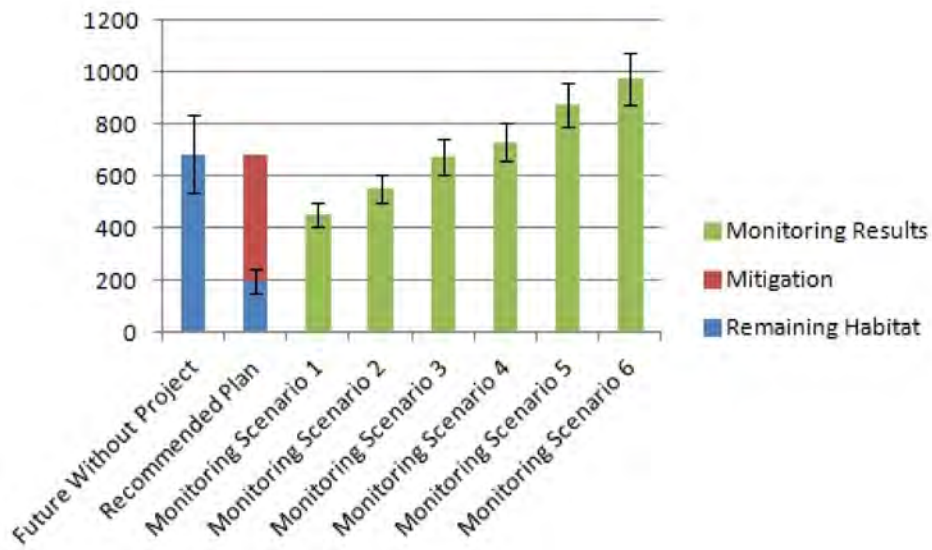


Figure: 7.1

Hypothetical Adaptive Management Thresholds and Monitoring Scenarios