



**U.S. ARMY CORPS OF ENGINEERS
REGULATORY PROGRAM
APPROVED JURISDICTIONAL DETERMINATION FORM (INTERIM)
NAVIGABLE WATERS PROTECTION RULE**

I. ADMINISTRATIVE INFORMATION

Completion Date of Approved Jurisdictional Determination (AJD): 1/21/2021

ORM Number: MVM-2021-024

Associated JDs: MVM-2021-024

Review Area Location¹: State/Territory: Mississippi City: Lynchburg County/Parish/Borough: Desoto

Center Coordinates of Review Area: Latitude 34.968097° Longitude -90.084310°

II. FINDINGS

A. Summary: Check all that apply. At least one box from the following list MUST be selected. Complete the corresponding sections/tables and summarize data sources.

- The review area is comprised entirely of dry land (i.e., there are no waters or water features, including wetlands, of any kind in the entire review area). Rationale: N/A or describe rationale.
- There are “navigable waters of the United States” within Rivers and Harbors Act jurisdiction within the review area (complete table in Section II.B).
- There are “waters of the United States” within Clean Water Act jurisdiction within the review area (complete appropriate tables in Section II.C).
- There are waters or water features excluded from Clean Water Act jurisdiction within the review area (complete table in Section II.D).

B. Rivers and Harbors Act of 1899 Section 10 (§ 10)²

§ 10 Name	§ 10 Size	§ 10 Criteria	Rationale for § 10 Determination
N/A.	N/A.	N/A.	N/A.

C. Clean Water Act Section 404

Territorial Seas and Traditional Navigable Waters ((a)(1) waters): ³			
(a)(1) Name	(a)(1) Size	(a)(1) Criteria	Rationale for (a)(1) Determination
N/A.	N/A.	N/A.	N/A.

Tributaries ((a)(2) waters):			
(a)(2) Name	(a)(2) Size	(a)(2) Criteria	Rationale for (a)(2) Determination
N/A.	N/A.	N/A.	N/A.

Lakes and ponds, and impoundments of jurisdictional waters ((a)(3) waters):			
(a)(3) Name	(a)(3) Size	(a)(3) Criteria	Rationale for (a)(3) Determination
N/A.	N/A.	N/A.	N/A.

Adjacent wetlands ((a)(4) waters):			
(a)(4) Name	(a)(4) Size	(a)(4) Criteria	Rationale for (a)(4) Determination
N/A.	N/A.	N/A.	N/A.

¹ Map(s)/figure(s) are attached to the AJD provided to the requestor.

² If the navigable water is not subject to the ebb and flow of the tide or included on the District’s list of Rivers and Harbors Act Section 10 navigable waters list, do NOT use this document to make the determination. The District must continue to follow the procedure outlined in 33 CFR part 329.14 to make a Rivers and Harbors Act Section 10 navigability determination.

³ A stand-alone TNW determination is completed independently of a request for an AJD. A stand-alone TNW determination is conducted for a specific segment of river or stream or other type of waterbody, such as a lake, where upstream or downstream limits or lake borders are established. A stand-alone TNW determination should be completed following applicable guidance and should NOT be documented on the AJD Form.



**U.S. ARMY CORPS OF ENGINEERS
REGULATORY PROGRAM
APPROVED JURISDICTIONAL DETERMINATION FORM (INTERIM)
NAVIGABLE WATERS PROTECTION RULE**

D. Excluded Waters or Features

Excluded waters ((b)(1) – (b)(12)): ⁴				
Exclusion Name	Exclusion Size		Exclusion ⁵	Rationale for Exclusion Determination
Stream SA001	1,112.9 0	linear feet	(b)(3) Ephemeral feature, including an ephemeral stream, swale, gully, rill, or pool.	This stream only flows in direct response to precipitation.
Wetland WA001	1.91	acre(s)	(b)(1) Non-adjacent wetland.	This wetland does not abut an (a)(1) – (a)(3) water.

III. SUPPORTING INFORMATION

A. Select/enter all resources that were used to aid in this determination and attach data/maps to this document and/or references/citations in the administrative record, as appropriate.

Information submitted by, or on behalf of, the applicant/consultant: [Aquatic Resources delineation Report for the Proposed Willow Point Project prepared by SWCA Environmental Consultants on behalf of W.H. Porter Consultants, PLLC. Dated: October 2020.](#)

This information is sufficient for purposes of this AJD.

Rationale: [N/A or describe rationale for insufficiency \(including partial insufficiency\).](#)

- Data sheets prepared by the Corps: [Title\(s\) and/or date\(s\).](#)
- Photographs: [Aerial and Other: Willow Point Project delineation report prepared by SWCA Environmental Consultants.](#)
- Corps site visit(s) conducted on: [January 19, 2021](#)
- Previous Jurisdictional Determinations (AJDs or PJDs): [ORM Number\(s\) and date\(s\).](#)
- Antecedent Precipitation Tool: [provide detailed discussion in Section III.B.](#)
- USDA NRCS Soil Survey: [Title\(s\) and/or date\(s\).](#)
- USFWS NWI maps: [Title\(s\) and/or date\(s\).](#)
- USGS topographic maps: [Title\(s\) and/or date\(s\).](#)

Other data sources used to aid in this determination:

Data Source (select)	Name and/or date and other relevant information
USGS Sources	N/A.
USDA Sources	N/A.
NOAA Sources	N/A.
USACE Sources	N/A.
State/Local/Tribal Sources	N/A.
Other Sources	N/A.

B. Typical year assessment(s): [The antecedent precipitation tool calculated the day of the site visit to be “Normal Conditions”.](#)

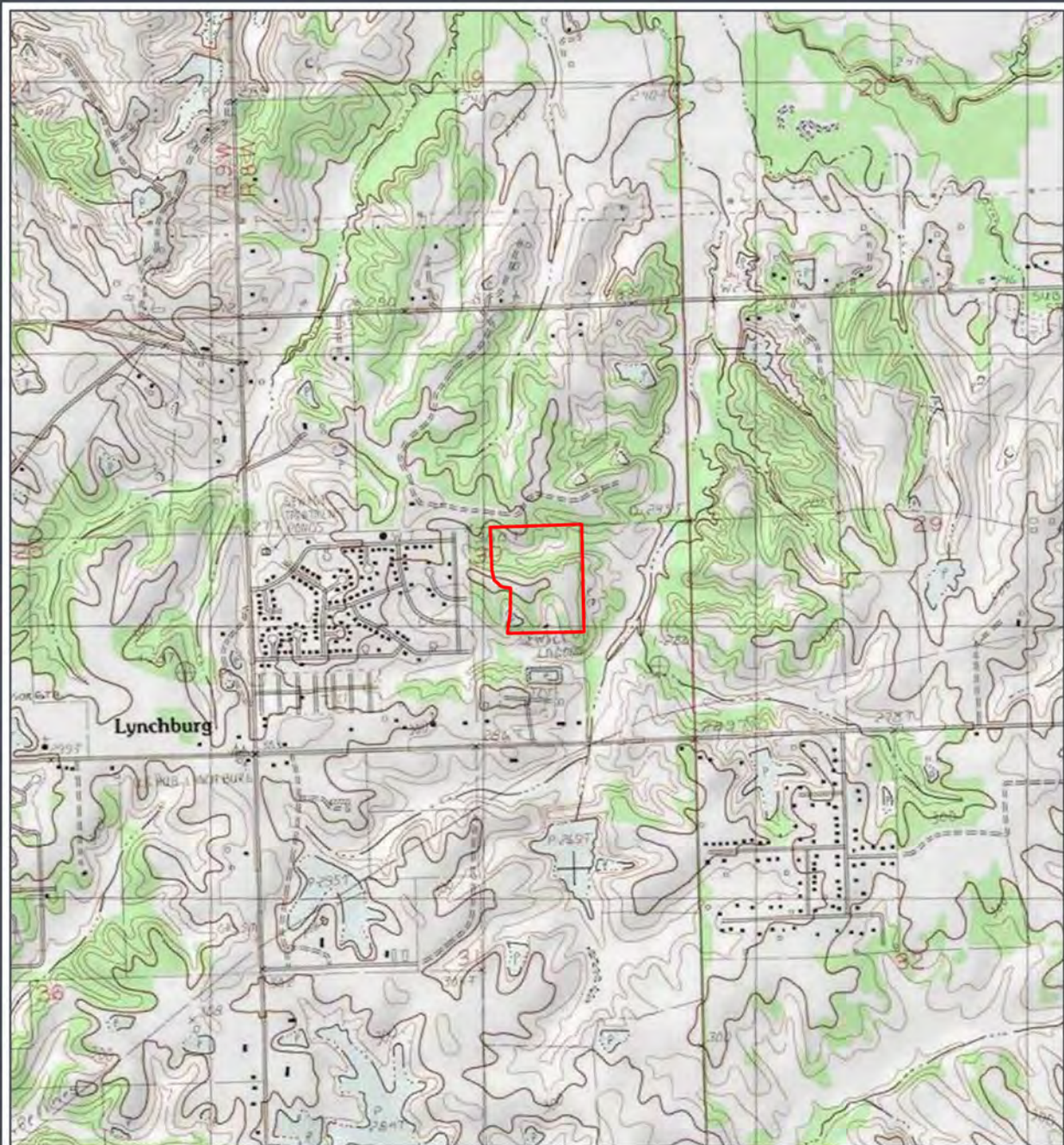
⁴ Some excluded waters, such as (b)(2) and (b)(4), may not be specifically identified on the AJD form unless a requestor specifically asks a Corps district to do so. Corps districts may, in case-by-case instances, choose to identify some or all of these waters within the review area.

⁵ Because of the broad nature of the (b)(1) exclusion and in an effort to collect data on specific types of waters that would be covered by the (b)(1) exclusion, four sub-categories of (b)(1) exclusions were administratively created for the purposes of the AJD Form. These four sub-categories are not new exclusions, but are simply administrative distinctions and remain (b)(1) exclusions as defined by the NWPR.



**U.S. ARMY CORPS OF ENGINEERS
REGULATORY PROGRAM
APPROVED JURISDICTIONAL DETERMINATION FORM (INTERIM)
NAVIGABLE WATERS PROTECTION RULE**

C. Additional comments to support AJD: [Please reference the attached map for the reviewed area's boundaries, features and locations.](#)



WILLOW POINT PROJECT
 AQUATIC RESOURCES DELINEATION
Figure 1. Vicinity Map

 Project Area

DeSoto County, MS
 USGS 7.5' Quadrangle:
 Horn Lake, MS, 34090-H1
 1S 8W Section30
 NAD 1983 UTM Zone 15N
 90.0846°W 34.968°N



Base Map: ESRI ArcGIS Online,
 accessed October 2020
 Updated: 10/21/2020
 Project No. 63002
 File: 63002_WillowPoint_VicinityMap



Holly Ridge Dr

Redberry Dr

Alpine Dr

Willow Oak Dr

7230

7230

DP001_U

DP001_PFO

SA001

PP01

WA001

DP002_U

PP04


PP05

PP06

DP003_U

WILLOW POINT PROJECT AQUATIC RESOURCES DELINEATION

Figure 3. Delineation Map

-  Photo Point
-  Data Point
-  Ephemeral Stream
-  Forested Wetland
-  Project Area

DeSoto County, MS
 USGS 7.5' Quadrangle:
 Horn Lake, MS, 34090-H1
 1S 8W Section30
 NAD 1983 UTM Zone 15N
 90.0846°W 34.968°N

Base Map: ESRI ArcGIS Online,
 accessed October 2020

Updated: 10/21/2020
 Project No. 63002

File: 63002_WillowPoint_DelineationMap



Mississippi

